



The **TEKNIK SATRIA** is one of four vessels owned and operated by **TL Geohydrographics** within the Asia Pacific area. This dedicated survey vessel can operate using a fully **Dynamic Positioning System** as well as having four point mooring facilities available.

The vessel is fitted with two transducer gate valves (1x 16" and 1x 12") and has two hull mounted 33kHz and 210kHz echo sounder transducers.

The vessel is **fully air-conditioned** and can provide accommodation for a total of 36 berths, with a large mess room, recreational facilities and a hospital.

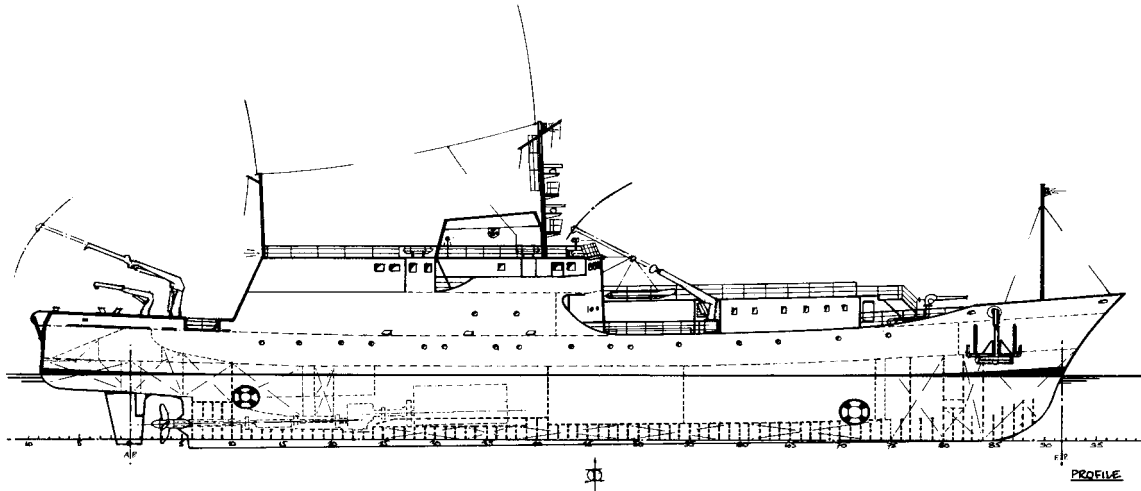
A **Survey and Post Processing Room** is aft of the wheelhouse with fitted work surfaces shelving and storage cupboards. There is 35 square metres of deck space forward of the bridge useful for ROV deployment and 160 square metres of free deck space aft on the main deck 70 square metres under cover.

The Teknik Satria has capacity for 154 Tonnes of fuel and 140 Tonnes of fresh water with a fresh water generator capable of producing up to 8 Tonnes per day.

The vessel's **Life saving** facilities conform to International Conventions for safety of life at sea, with a capacity for 40 persons. A well marked helicopter winching area located on the forward deck area.

Since her purchase by TL Geohydrographics, the vessel has been operating as an ROV support vessel on Offshore Construction Projects throughout the Asia Pacific Region.

## Vessel Specifications:



### GENERAL

Commissioned : 1966  
 Rebuilt : 1981 for DP ROV Operations  
 Refitted : 1997  
 Port of Registry : Panama  
 Call Sign : HP 9060  
 Present Owners : TL Geohydrographics Sdn Bhd  
 Builder : Lubecker Flenderwerke, Germany  
 Class : Bureau Veritas E3/3 Deep Sea  
 ICE 1 for world wide trading

### MACHINERY

Engines : M.A.K. Diesel Type MA 582 AK  
 dev 2200 BHP @ 300 rpm  
 Propulsion : A Escher Wyss V.P. Propeller  
 Bow Thruster : Jastram BU100F dev 1100 BHP driven by  
 Deutz SBA 16M 816 diesel Engine  
 Stern Thruster : Jastram BU 60F dev 520 BHP driven by  
 main engine or hydraulic pack  
 Auxiliaries : 236Kw 440v AC 3 phase 60Hz  
 Driven by Deutz S/BA 6M816  
 236Kw 440v AC 3 phase 60 Hz  
 Driven by Deutz BA 16M816  
 156Kw 440v AC 3 phase 60Hz  
 Driven by Deutz BF 6M716

### CONSUMPTION

Port : 0.5 MT/day  
 Survey Mode : 2.5 MT/day  
 Working D.P. Mode: 3.0 MT/day  
 Transit : 4.5 MT/day  
 Maximum Speed : 12 Knots  
 Endurance : 30 days

### CRANES

Aft Deck Crane : 1 Elec/hyd Effer type 25000  
 Crane capacity SWL 8mt(2.5t @ 9.5mts)  
 Available for survey operations.

### ACCOMMODATION

Total Available : 36 berths  
 Clients Berths : 2 x single cabins  
 Crew Berths : 16 Berths  
 8 x single and 4 x double  
 Passenger (survey): 16 Berths  
 2 x single and 7 x double  
 Hospital : 2 x single berths

### DYNAMIC POSITION CONTROL SYSTEM

System Type : Robertson RPM DP  
 Reference : SIMRAD HPR 310T USBL  
 Control : Joystick, Follow sub and station Keeping

### COMMUNICATIONS

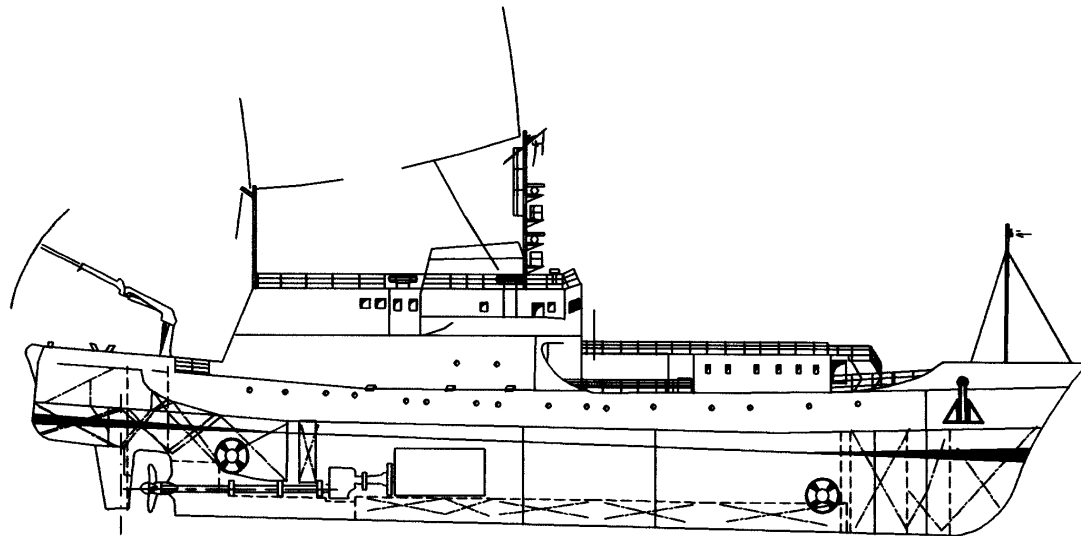
Vessel : Skanti TRP 5000 400 watt SSB Radio  
 INMARSAT 'B' Satellite with voice/fax facilities.  
 2 x VHF radios  
 Rescue : TR/rec Skanti TRP1  
 Mobile Phone : Malaysian ATURA

### ELECTRIC

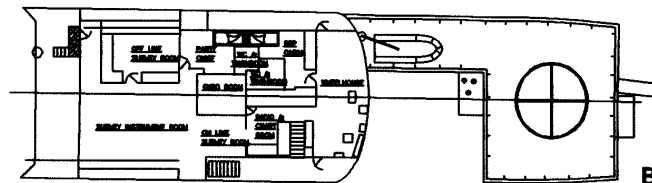
Mains Power : 380/220V 3ph 60hz  
 : 24V for Emergency use

### PHYSICAL SPECIFICATIONS

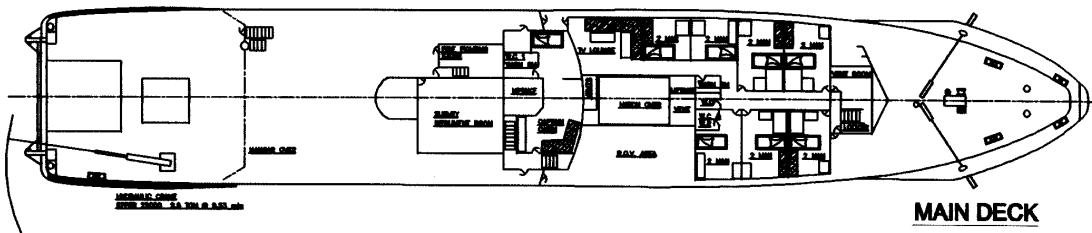
Dimensions  
 Length O.A. : 64.19 metres  
 Breadth : 10.10 metres  
 Depth Moulded : 7.25 metres (main deck)  
 Draft Max. : 5.6 metres  
 DWT : 343 Tons  
 Tonnage  
 Gross : 1145 Tons  
 Net : 253 Tons



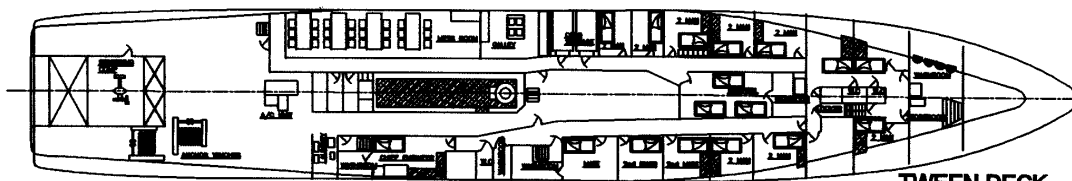
**PROFILE**



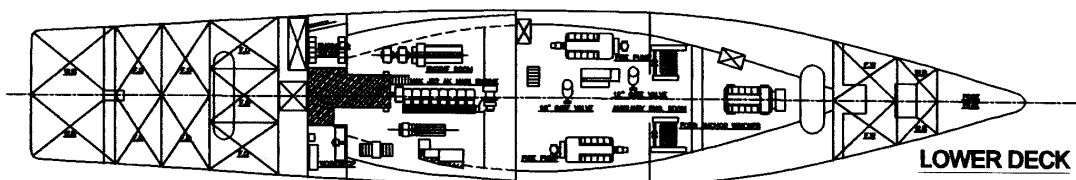
**BRIDGE DECK**



**MAIN DECK**



**TWEEN DECK**



**LOWER DECK**

\*NOTE : 1. Drawing is not to scale

**TEKNIK SATRIA**